

# Water & Sewer Authority Governance Structures



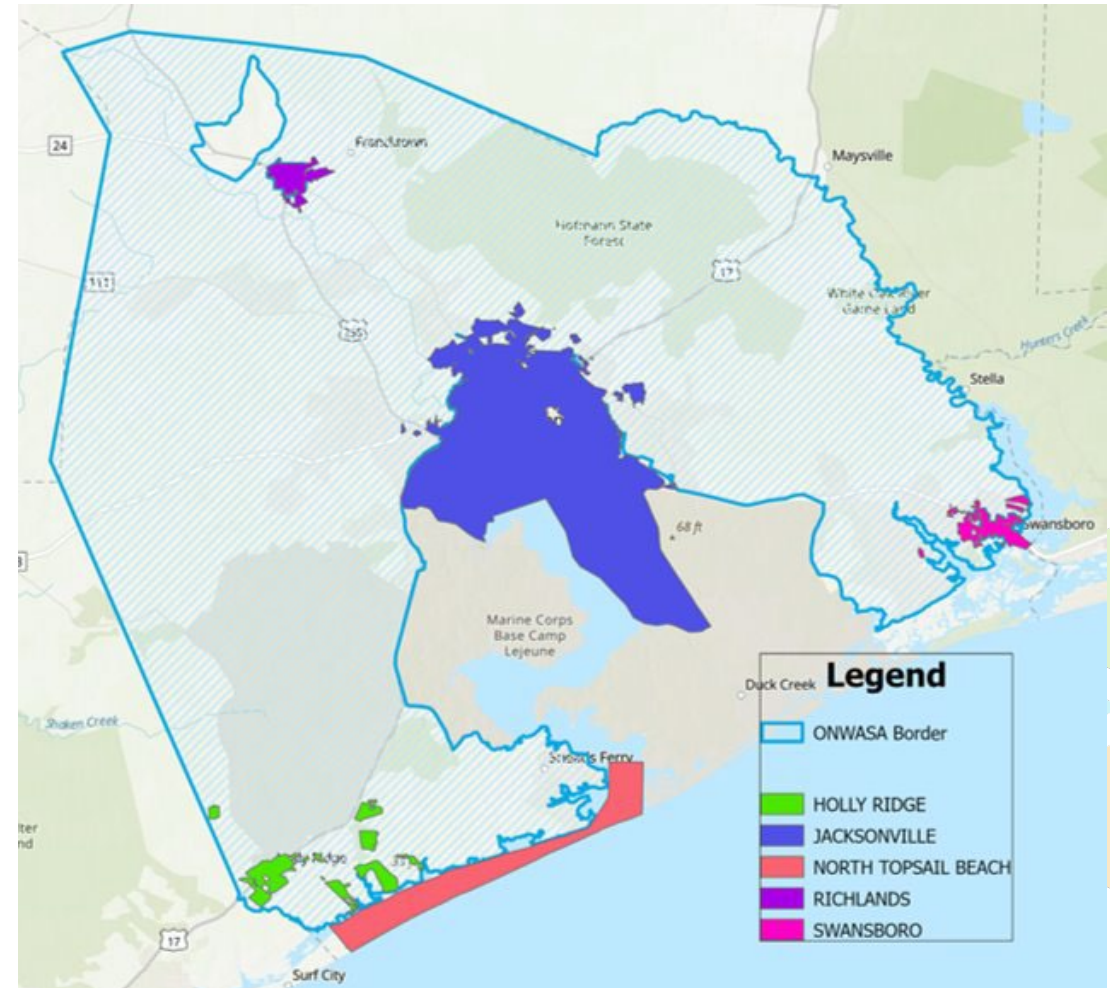
# Benchmark Comparison Authorities

- Broad River Water Authority (BRWA) – Rutherford Co.
- Neuse Regional Water & Sewer Authority (NRWASA) – Kinston Area
- Onslow Water & Sewer Authority (ONWASA) – Onslow Co.
- Orange Water & Sewer Authority (OWASA) – Orange Co.
- Piedmont Triad Regional Water Authority (PTRWA) – Greensboro Area
- South Granville Water & Sewer Authority (SGWASA) – Granville Co.
- Yadkin Valley Sewer Authority (YVSA) – Elkin Area

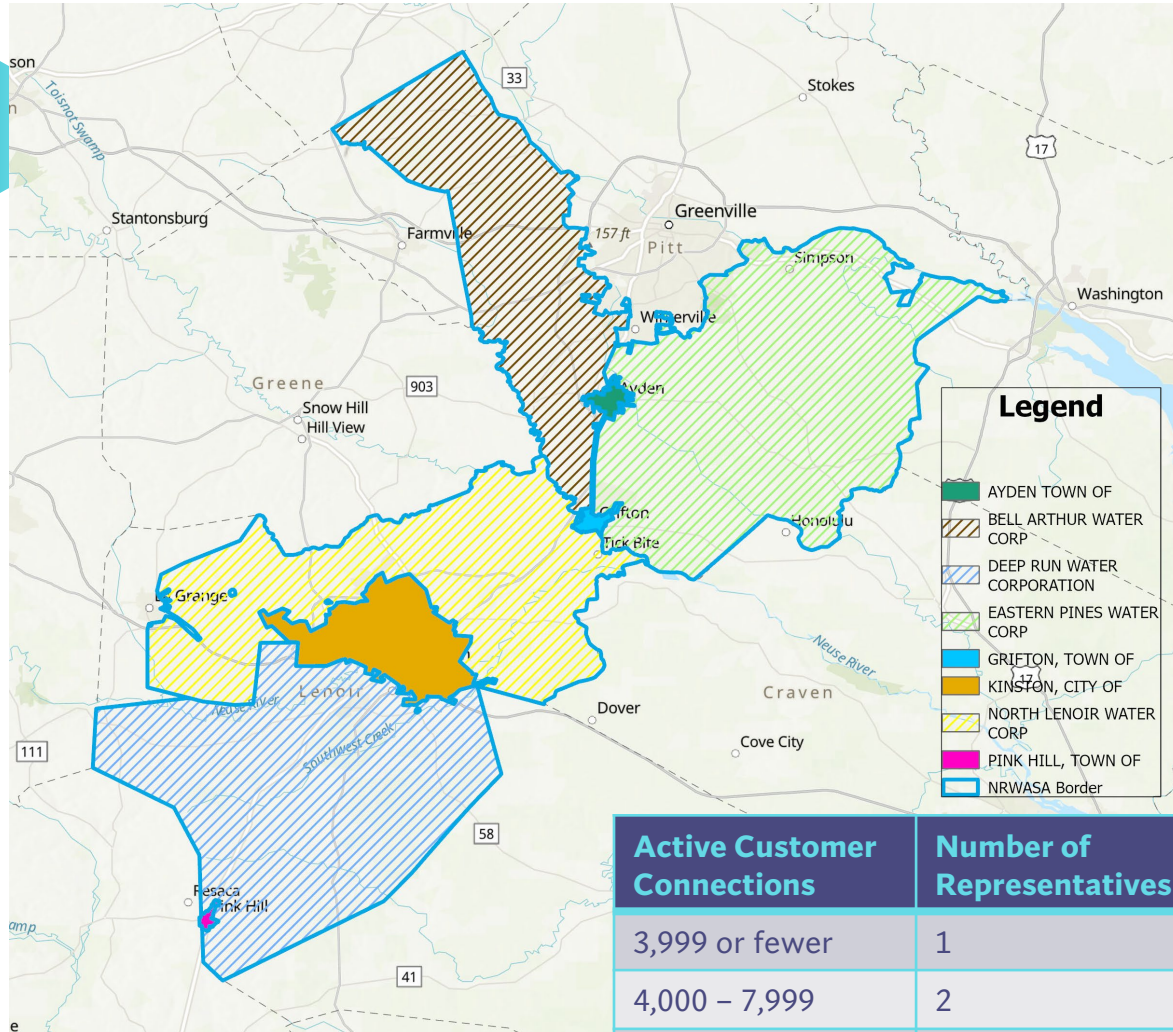


# Example 1: Onslow Water & Sewer Authority

- Serves a population of 144,155 people; 53,109 connections
- Serves 5 municipalities:
  - Jacksonville (pop. 70,420)
  - Swansboro (pop. 4,405)
  - North Topsail Beach (pop. 1,033)
  - Holly Ridge (pop. 4,909)
  - Richlands (pop. 2,355)
- Also serves several unincorporated communities in Onslow Co.
- Board structure: 8-member board consisting of elected official delegates:
  - 2 representing Onslow County
  - 2 representing the City of Jacksonville
  - 1 representing the Town of Swansboro
  - 1 representing the Town of Richlands
  - 1 representing the Town of North Topsail Beach
  - 1 representing the Town of Holly Ridge



# Example 2: Neuse Regional Water and Sewer Authority

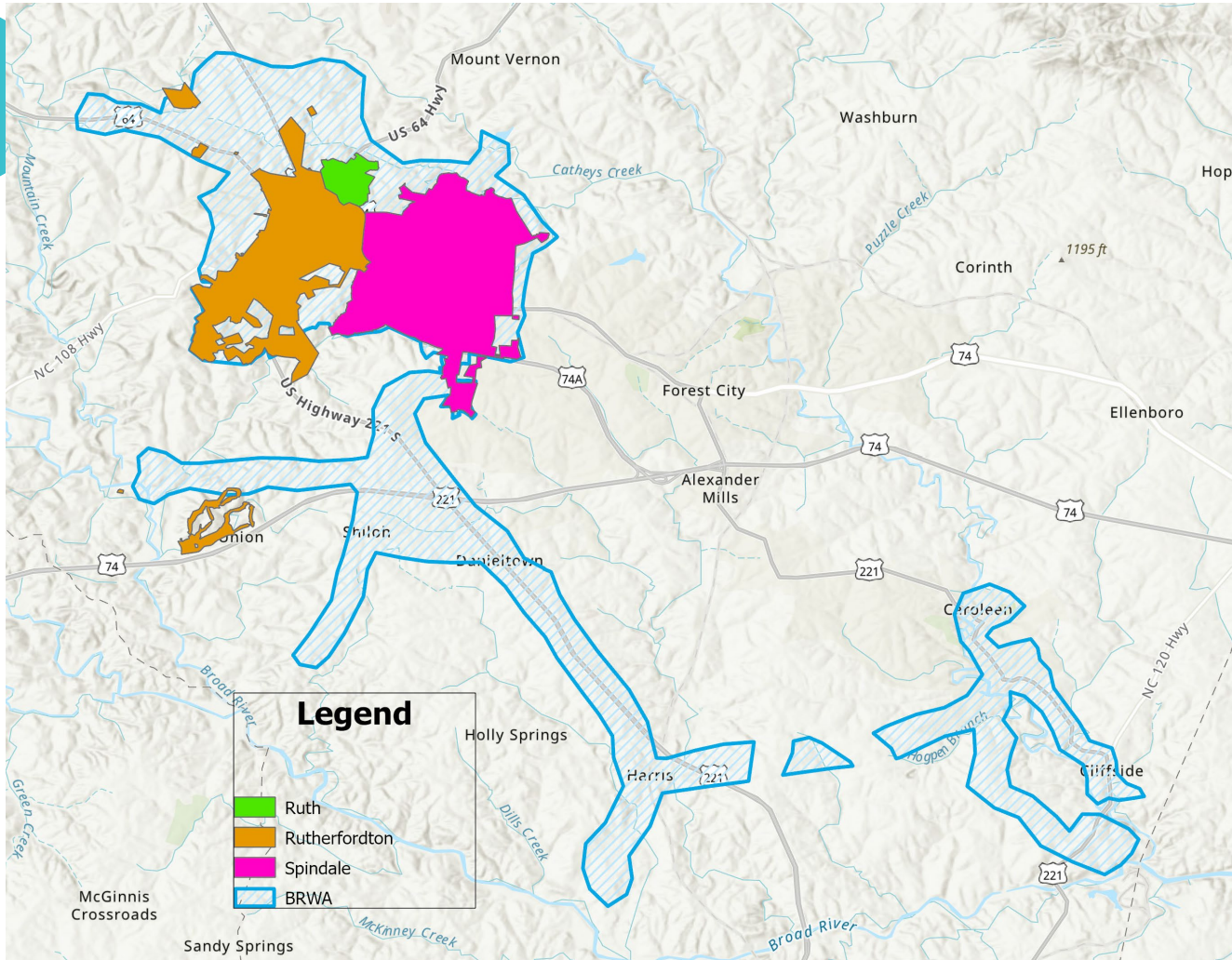


Active Customer Connections	Number of Representatives
3,999 or fewer	1
4,000 – 7,999	2
8,000 – 10,999	3
11,000 or greater	4

- Serves a population of 99,185 people; 39,572 connections
- Serves 4 municipalities:
  - Town of Ayden (Pop: 5,049)
  - Town of Grifton (Pop: 2,484)
  - City of Kinston (Pop: 19,365)
  - Town of Pink Hill (Pop: 453)
- Also serves several unincorporated communities in Pitt and Lenoir Counties, combined systems of four municipalities and four water corporations
- Board Structure: 15-member board consisting of appointed delegates:
  - 1 representing the Town of Ayden
  - 1 representing the Bell Arthur Water Corporation
  - 2 representing the Deep Run Water Corporation
  - 3 representing the Eastern Pines Water Corporation
  - 1 representing the Town of Grifton
  - 4 representing the City of Kinston
  - 2 representing the North Lenoir Water Corporation
  - 1 representing the Town of Pink Hill



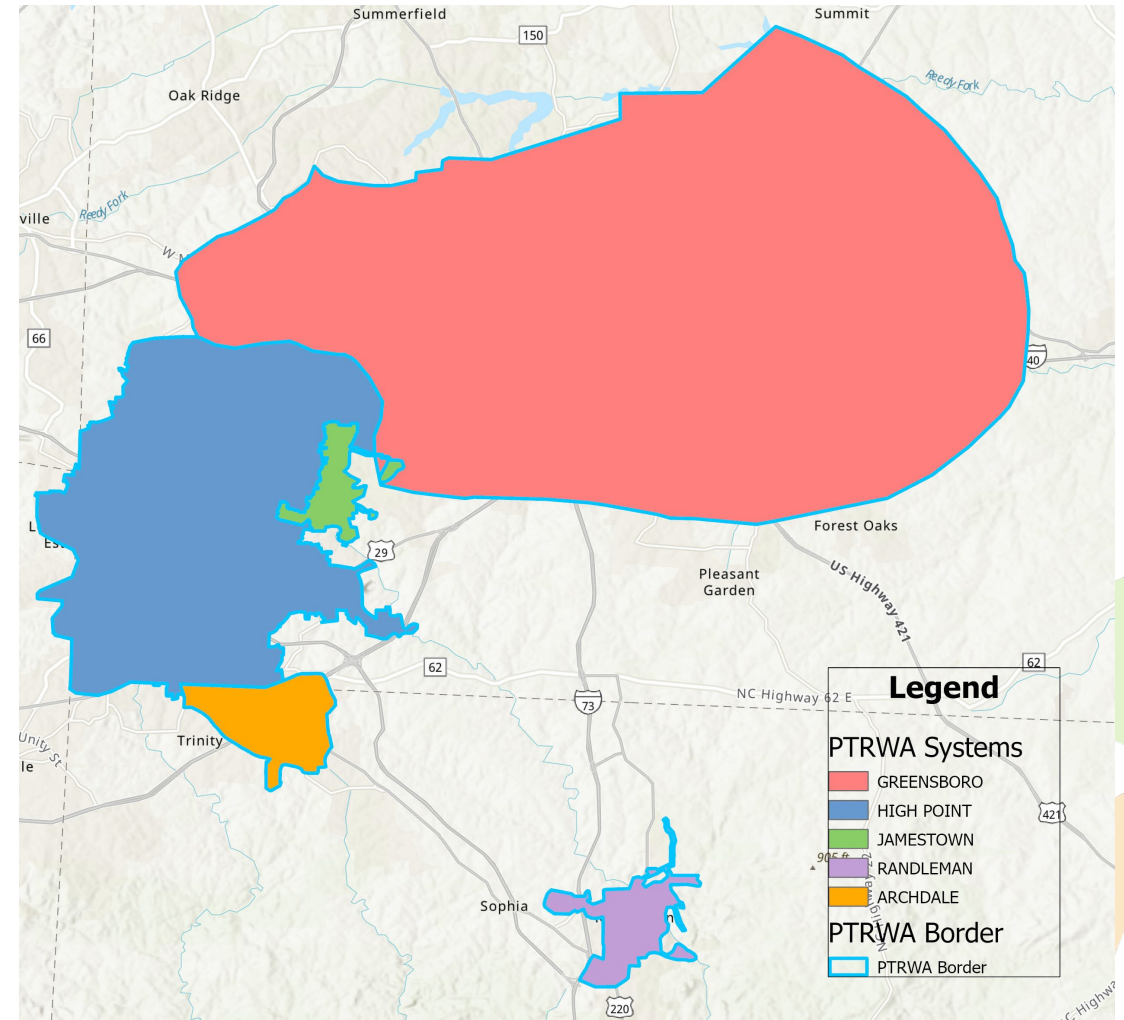
# Example 3: Broad River Water Authority



- Serves a population of 17,093 people; 6,387 connections
- Serves three municipalities:
  - Ruth (Pop: 352)
  - Rutherfordton (Pop: 3,654)
  - Spindale (Pop: 4,238)
- Also serves several unincorporated communities in Rutherford County
- Board Structure: 8-member board with consisting of appointed delegates:
  - 2 representing Rutherford County
  - 2 representing the Town of Rutherfordton
  - 2 representing the Town of Ruth
  - 2 representing the Town of Spindale

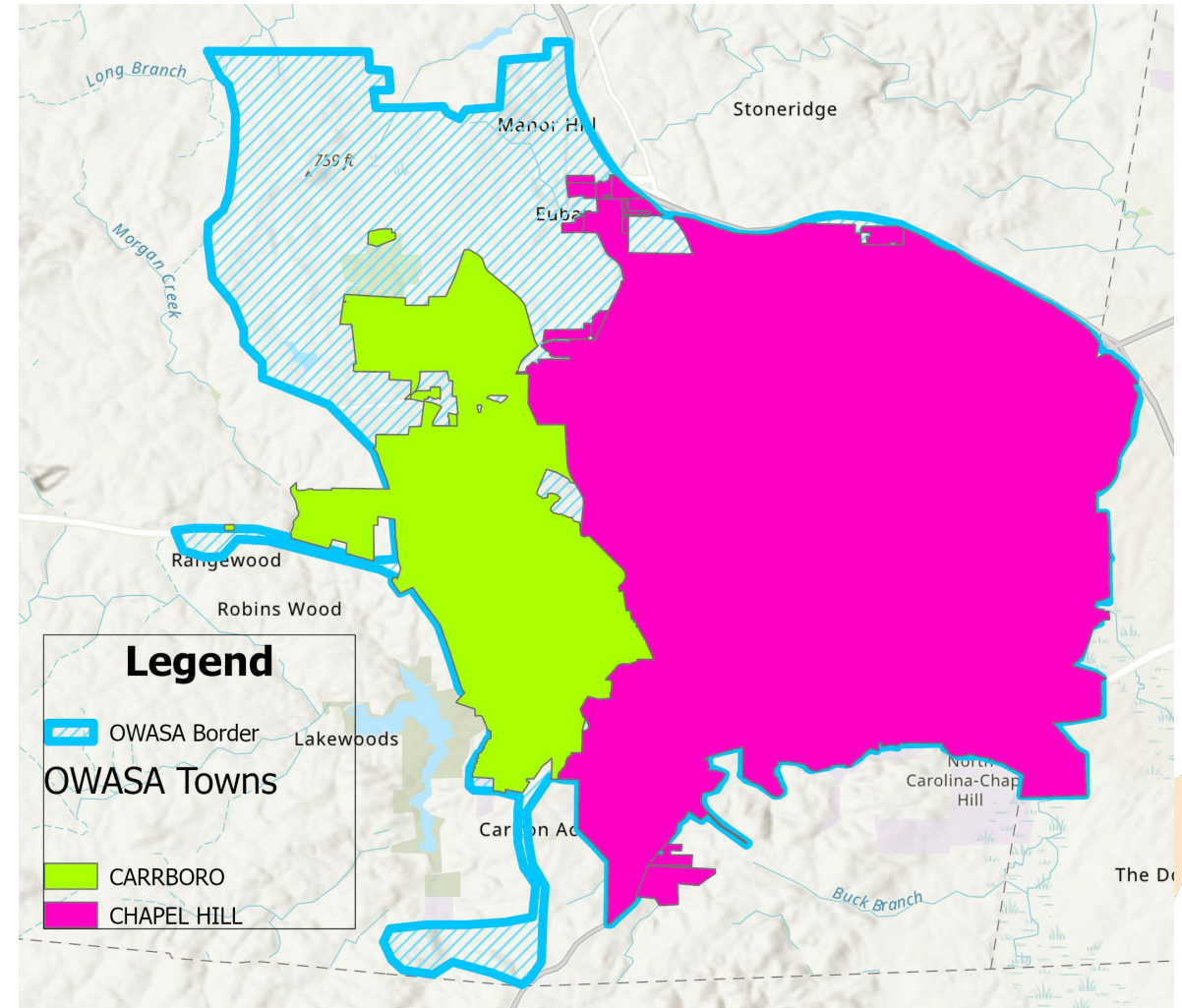
# Example 4: Piedmont Triad Regional Water Authority

- Serves a population of 460,095 people; 160,918 connections
- Serves 5 municipalities:
  - Greensboro (Pop: 301,115)
  - High Point (Pop: 115,067)
  - Town of Jamestown (Pop: 3,712)
  - Randleman (Pop: 4,642)
  - Archdale (Pop: 12,003)
- Board Structure: 10-member board with consisting of appointed delegates:
  - 3 representing the City of Greensboro
  - 2 representing the City of High Point
  - 2 representing Randolph County
  - 1 representing the Town of Jamestown
  - 1 representing City of Randleman
  - 1 representing the City of Archdale
- Board “based approximately on the pro rata share to be paid by each local government”

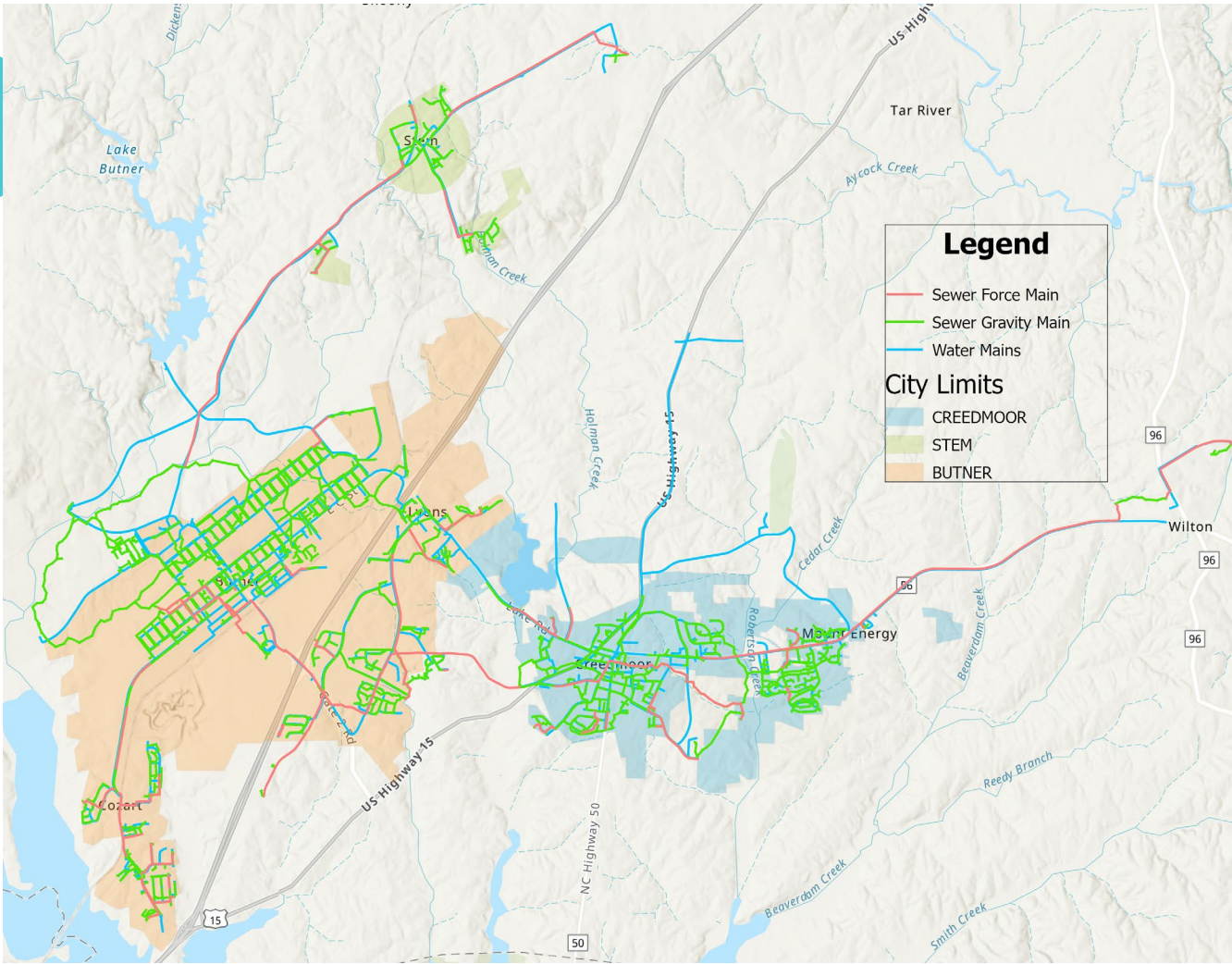


# Example 5: Orange Water and Sewer Authority

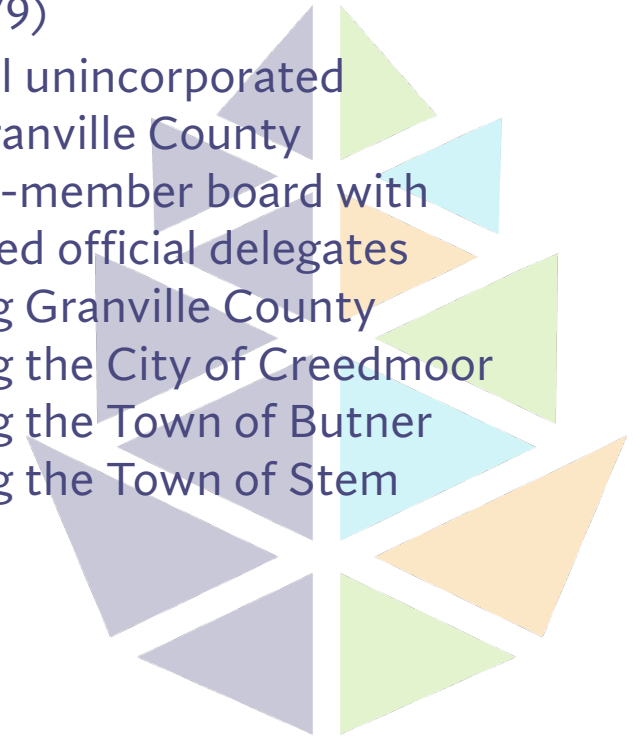
- Serves a population of 86,300 people; 21,849 connections
- Serves 2 municipalities:
  - Chapel Hill (Pop: 62,098)
  - Carrboro (Pop: 21,298)
- Also serves several unincorporated communities in Orange County
- Board Structure: 9-member board with consisting of appointed citizen delegates:
  - 5 representing the Town of Chapel Hill
  - 2 representing the Town of Carrboro
  - 2 representing Orange County



# Example 6: South Granville Water and Sewer Authority

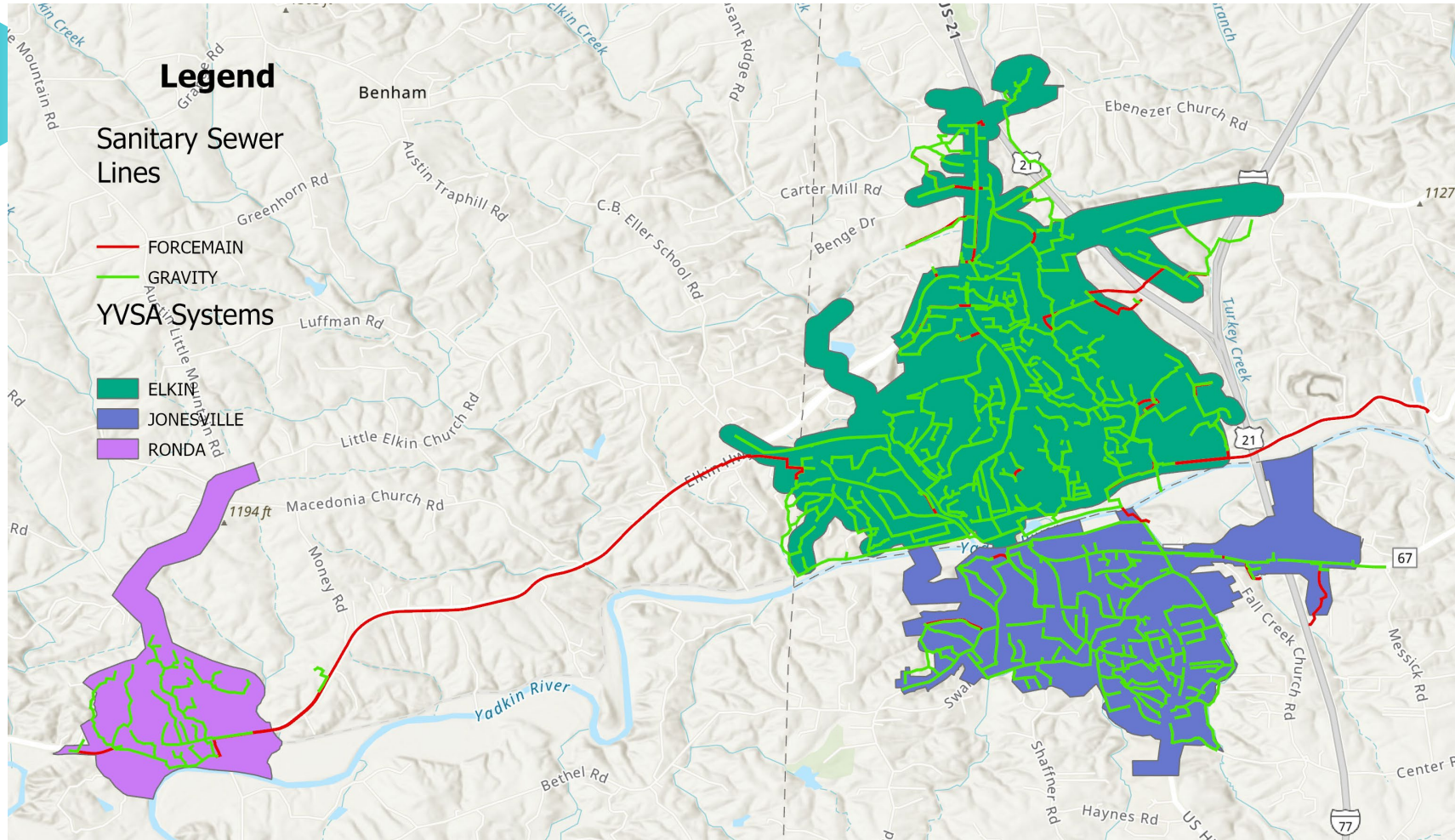


- Serves a population of 19,216 people; 5,638 connections
- Serves 3 municipalities:
  - Butner (Pop: 8,451)
  - Creedmoor (Pop: 4,974)
  - Stem (Pop: 979)
- Also serves several unincorporated communities in Granville County
- Board Structure: 7-member board with consisting of elected official delegates
  - 2 representing Granville County
  - 2 representing the City of Creedmoor
  - 2 representing the Town of Butner
  - 1 representing the Town of Stem





# Example 7: Yadkin Valley Sewer Authority



- Serves a population of ~7,212 people; ~3,717 connections\*
- Serves 3 municipalities:
  - Elkin (Pop: 4,091)
  - Jonesville (Pop: 2,311)
  - Ronda (Pop: 440)
- Also serves several unincorporated communities in the tri-county area
- Board Structure: 5-member board with consisting of elected official delegates
  - 2 representing the Town of Elkin
  - 2 representing the Town of Jonesville
  - 1 representing the Town of Ronda

\*town water connection data, this is a sewer-only authority

# Benchmark Comparison Authorities

- Onslow Water & Sewer Authority (ONWASA) – Onslow Co.
- Neuse Regional Water & Sewer Authority (NRWASA) – Kinston Area
- Broad River Water Authority (BRWA) – Rutherford Co.
- Piedmont Triad Regional Water Authority (PTRWA) – Greensboro Area
- Orange Water & Sewer Authority (OWASA) – Orange Co.
- South Granville Water & Sewer Authority (SGWASA) – Granville Co.
- Yadkin Valley Sewer Authority (YVSA) – Elkin Area



# Data References

Environmental Policy Innovation Institute, SimpleLab, & Internet of Water Coalition. (2023). *Provisional water utility service area boundaries viewer* [dataset]. <https://lincolninstitute.maps.arcgis.com/apps/instant/interactivelegend/index.html?appid=f5bf4babf66c4d72af88e13728da7ade>

Johnston, N. (2022a). *Elkin sewer* [dataset]. <https://www.arcgis.com/home/item.html?id=571bc58ea5064fb486f2ac2a515882bd>

Johnston, N. (2022b). *Jonesville sewer* [dataset]. <https://www.arcgis.com/home/item.html?id=23c71a93f6f044d29f020ef7b6bb59d1>

Onslow County GIS. (2021). *City limits* [dataset]. <https://hub-onslow.opendata.arcgis.com/datasets/onslow::city-limits/about>

Orange County GIS. (2024). *Municipal boundary* [dataset]. <https://www.orangecountync.gov/2057/Download-GIS-Data>

Rutherford County GIS. (2022). *City limits* [dataset]. <https://ws.onehub.com/folders/ek8tu481>

SGWASAGIS. (2023). *SGWASA water system for public view* [dataset]. <https://www.arcgis.com/home/item.html?id=c815611e94f04429a2fb8a459b8ad2dd>

Sheets, B. (2021). *Ronda sewer* [dataset]. <https://www.arcgis.com/home/item.html?id=86f32ac5ba8d4f0aa3fa8a91c609fe27>

U.S. Census Bureau. (2023). *Annual estimates of the resident population for incorporated places in North Carolina: April 1, 2020 to July 1, 2022* [dataset]. <https://www.census.gov/data/tables/time-series/demo/popest/2020s-total-cities-and-towns.html#v2022>

