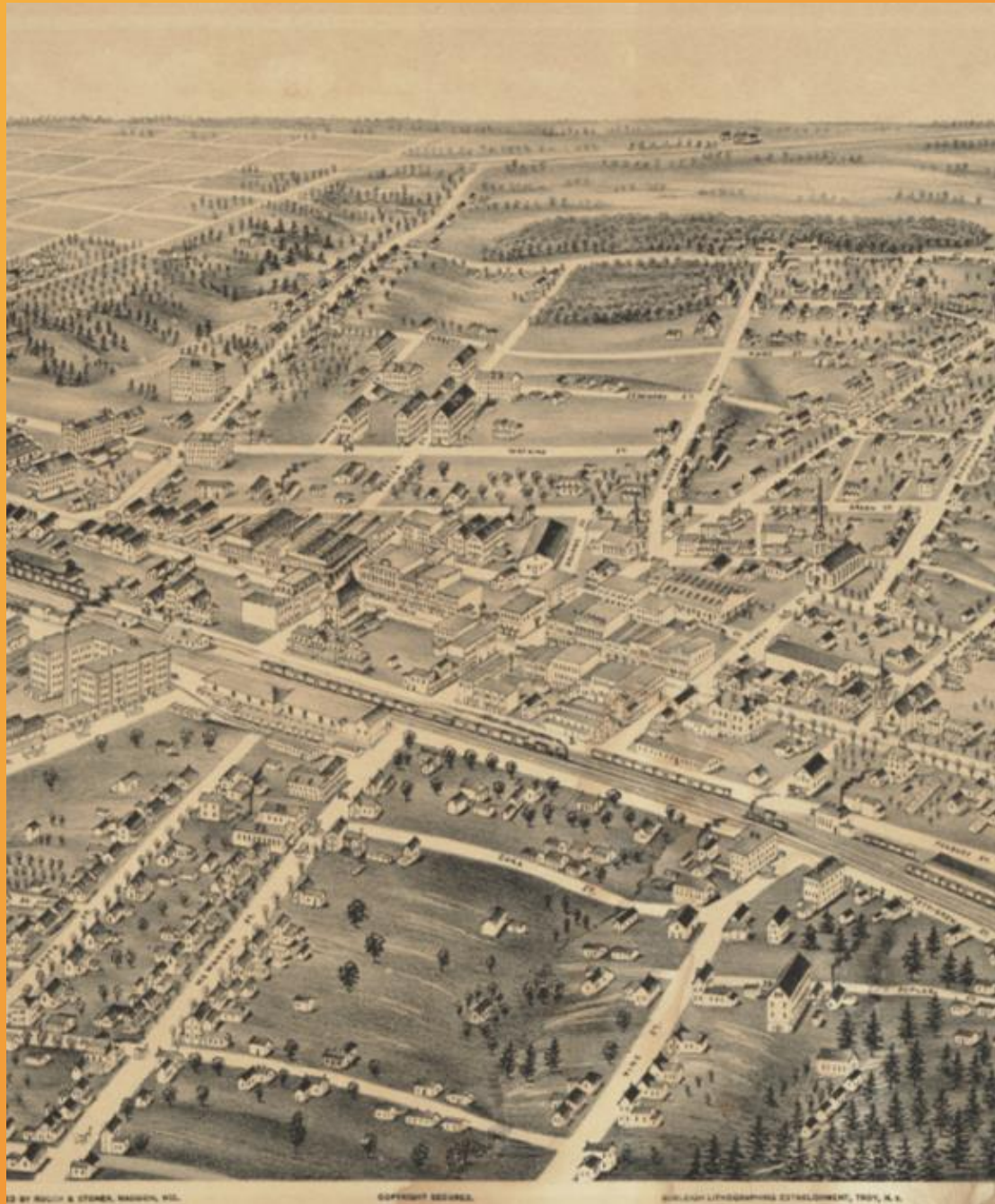


# Growth & Planning in the Central Pines Region





# Historic Growth of the Central Pines Region

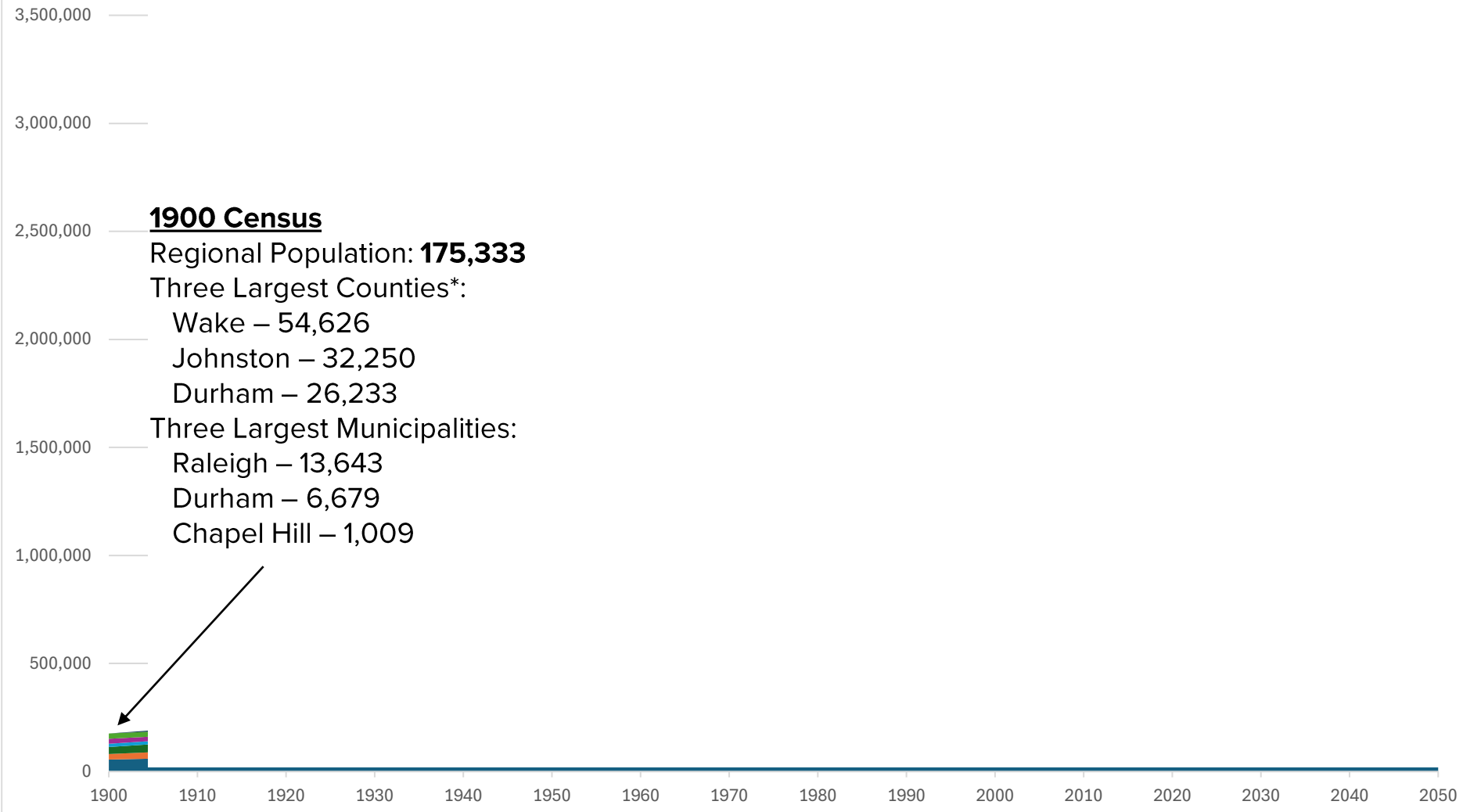


*"Birds Eye View of the City of Durham", Ruger & Stoner, 1891*

*(from [https://freepages.rootsweb.com/~orangecountync/computers/durhammaps\\_maps/bird1891.jpg](https://freepages.rootsweb.com/~orangecountync/computers/durhammaps_maps/bird1891.jpg))*



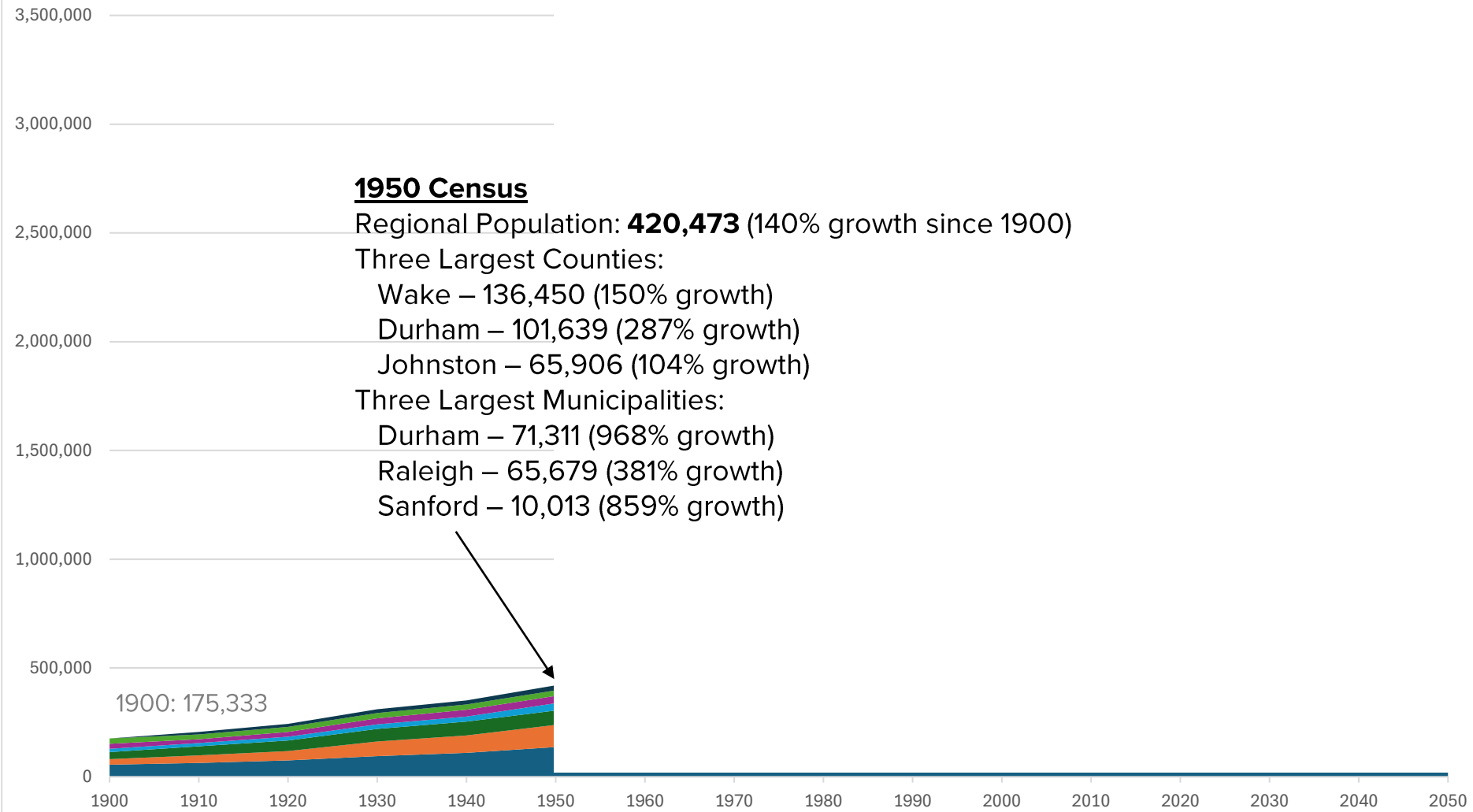
### Population of Central Pines Region 1900-2050



\* Lee County did not exist yet in 1900



## Population of Central Pines Region 1900-2050





## Population of Central Pines Region 1900-2050

### 2000 Census

Regional Population: **1,264,490** (201% growth since 1950)

Three Largest Counties:

Wake – 627,846 (360% growth)

Durham – 223,314 (120% growth)

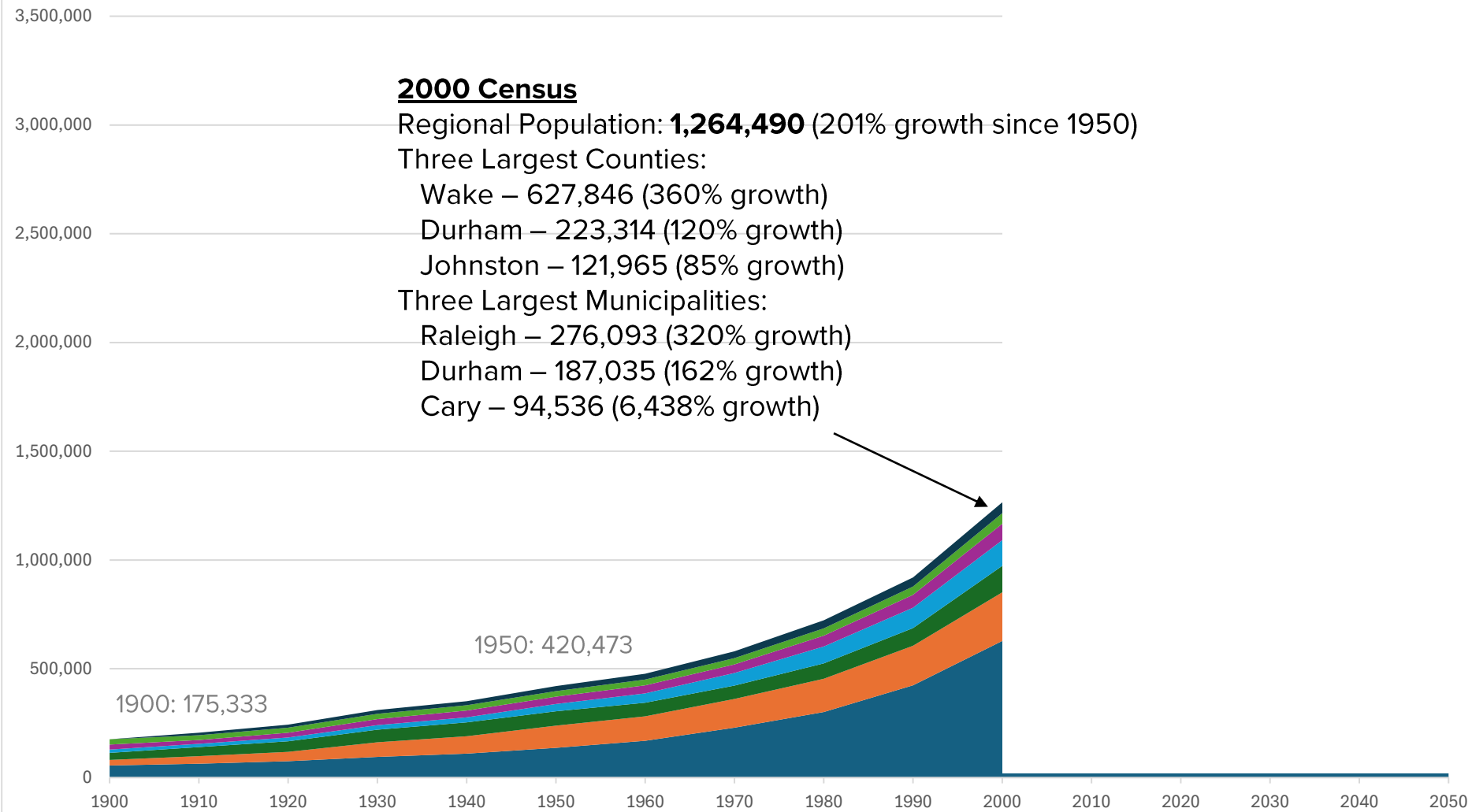
Johnston – 121,965 (85% growth)

Three Largest Municipalities:

Raleigh – 276,093 (320% growth)

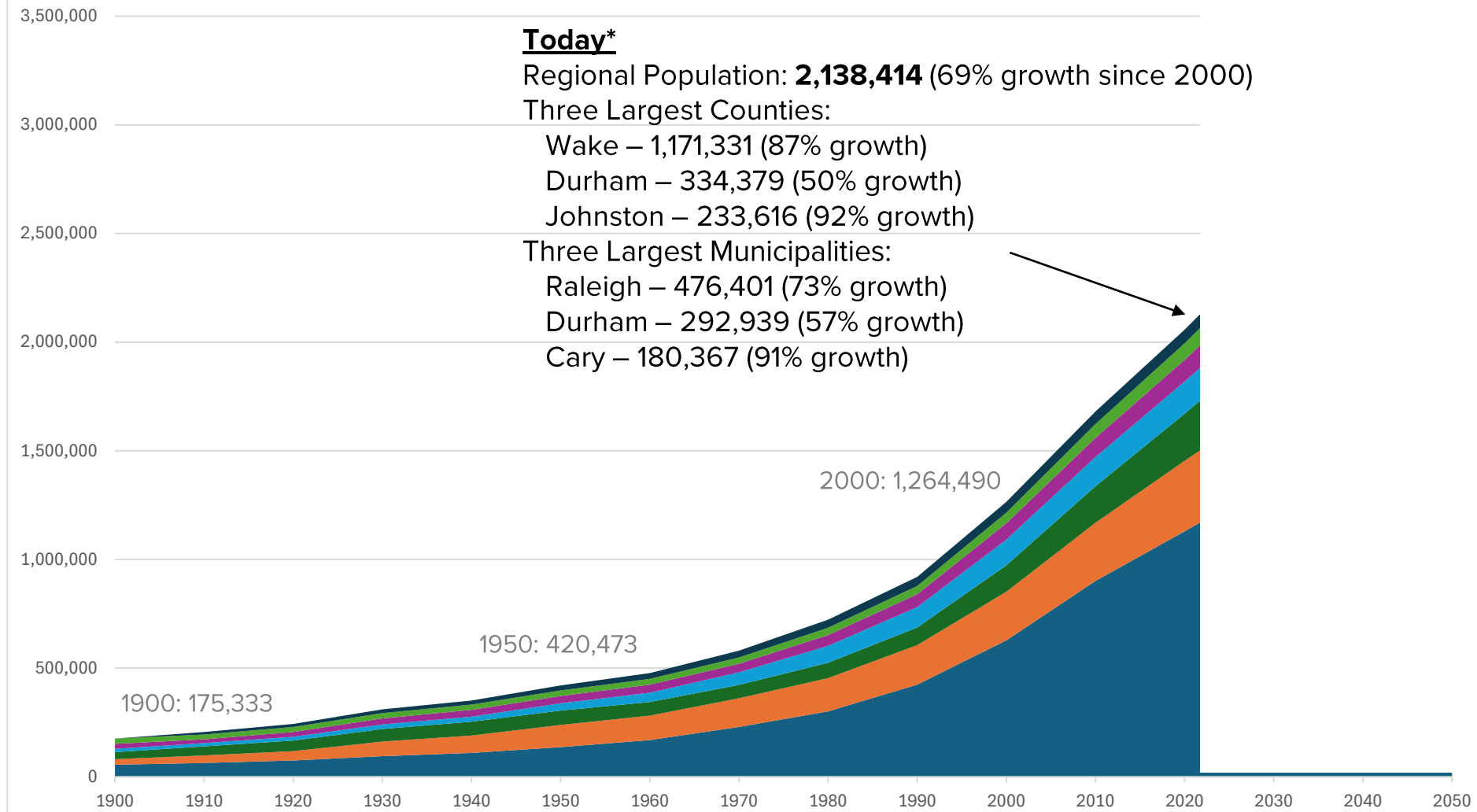
Durham – 187,035 (162% growth)

Cary – 94,536 (6,438% growth)





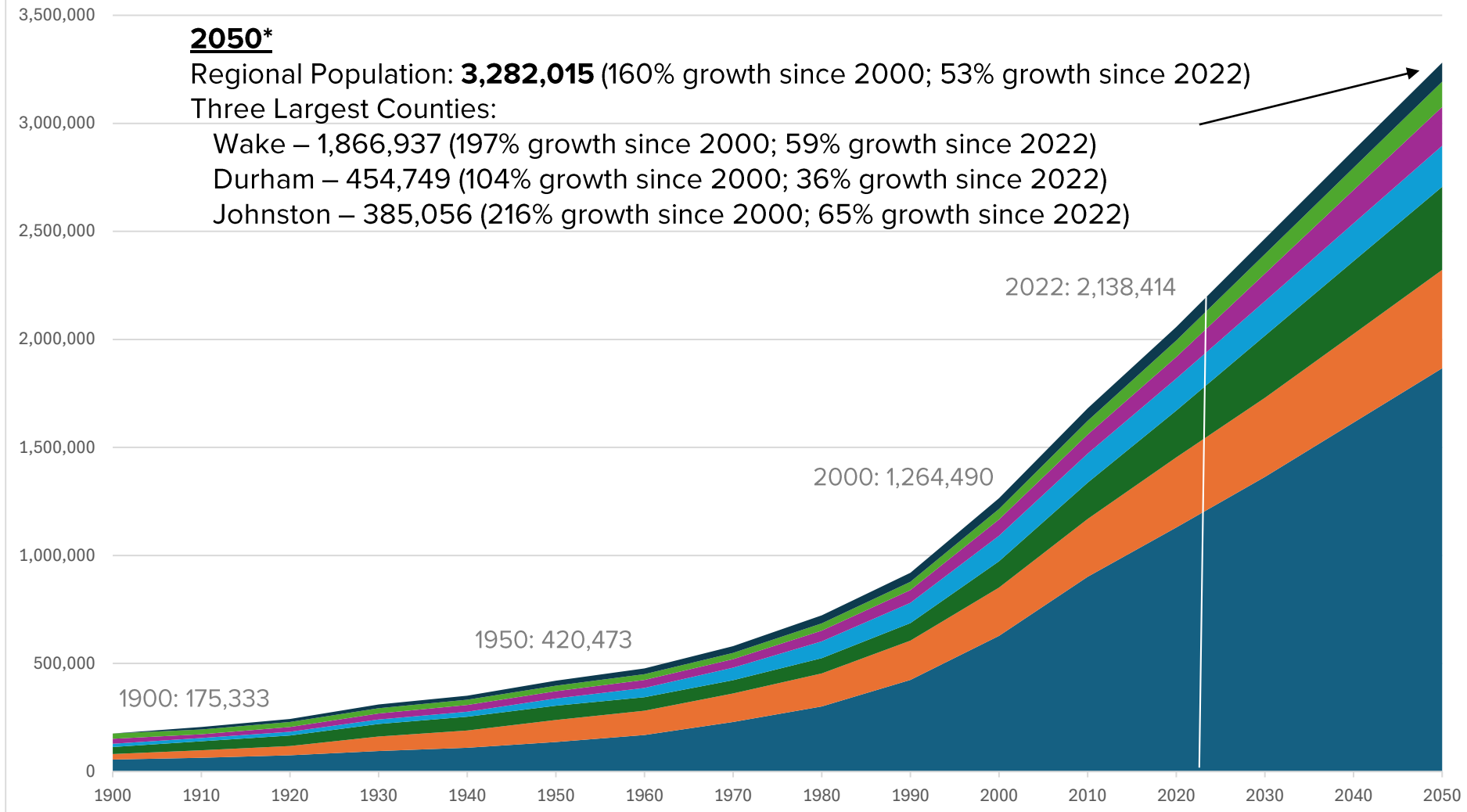
## Population of Central Pines Region 1900-2050



\* Most recent available OSBM estimates for cities and counties from 2022



### Population of Central Pines Region 1900-2050



#### 2050\*

Regional Population: **3,282,015** (160% growth since 2000; 53% growth since 2022)

#### Three Largest Counties:

Wake – 1,866,937 (197% growth since 2000; 59% growth since 2022)

Durham – 454,749 (104% growth since 2000; 36% growth since 2022)

Johnston – 385,056 (216% growth since 2000; 65% growth since 2022)

#### 2050 County Population:

Lee – 88,798

Chatham – 116,913

Moore – 179,890

Orange – 189,672

Johnston – 385,056

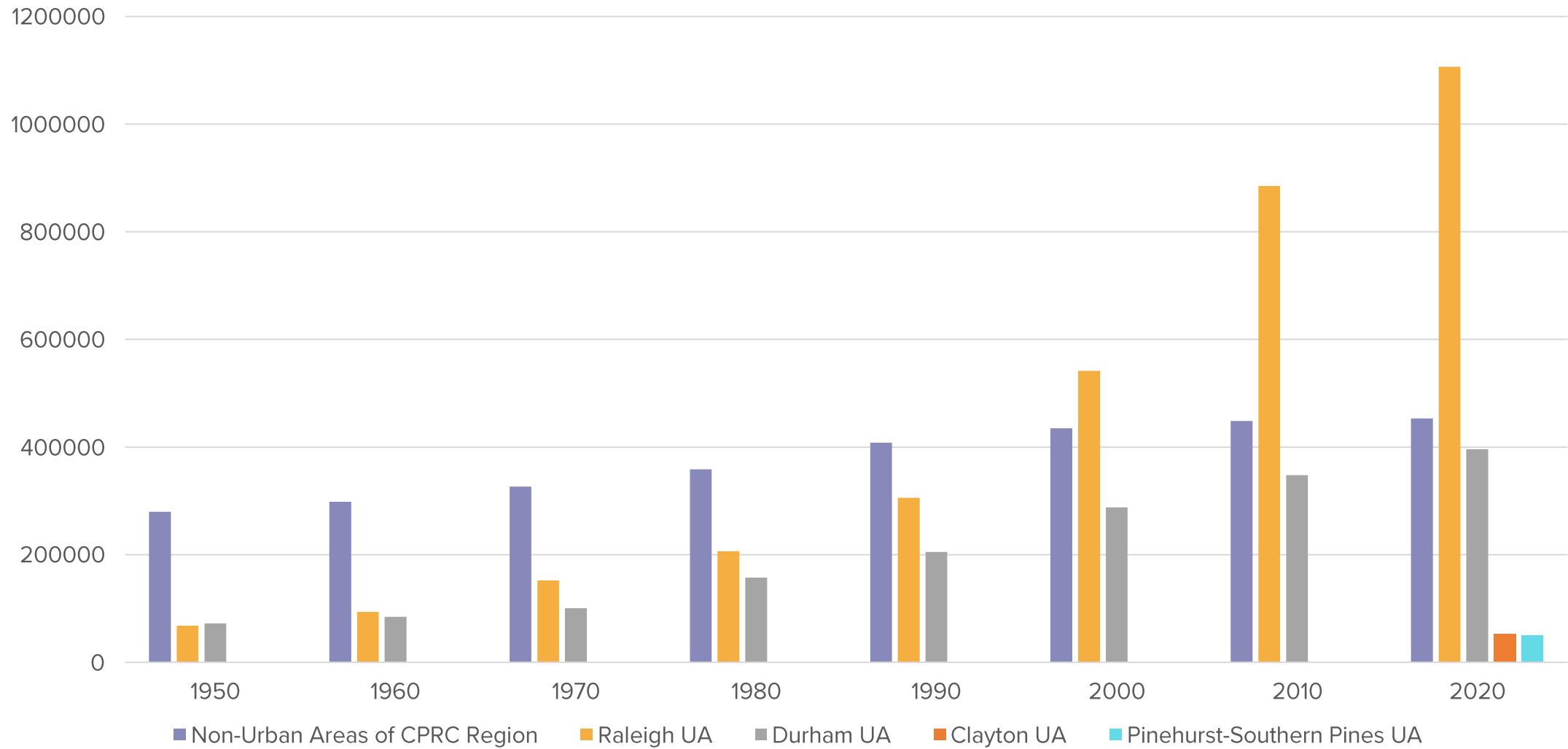
Durham – 454,749

Wake – 1,866,937

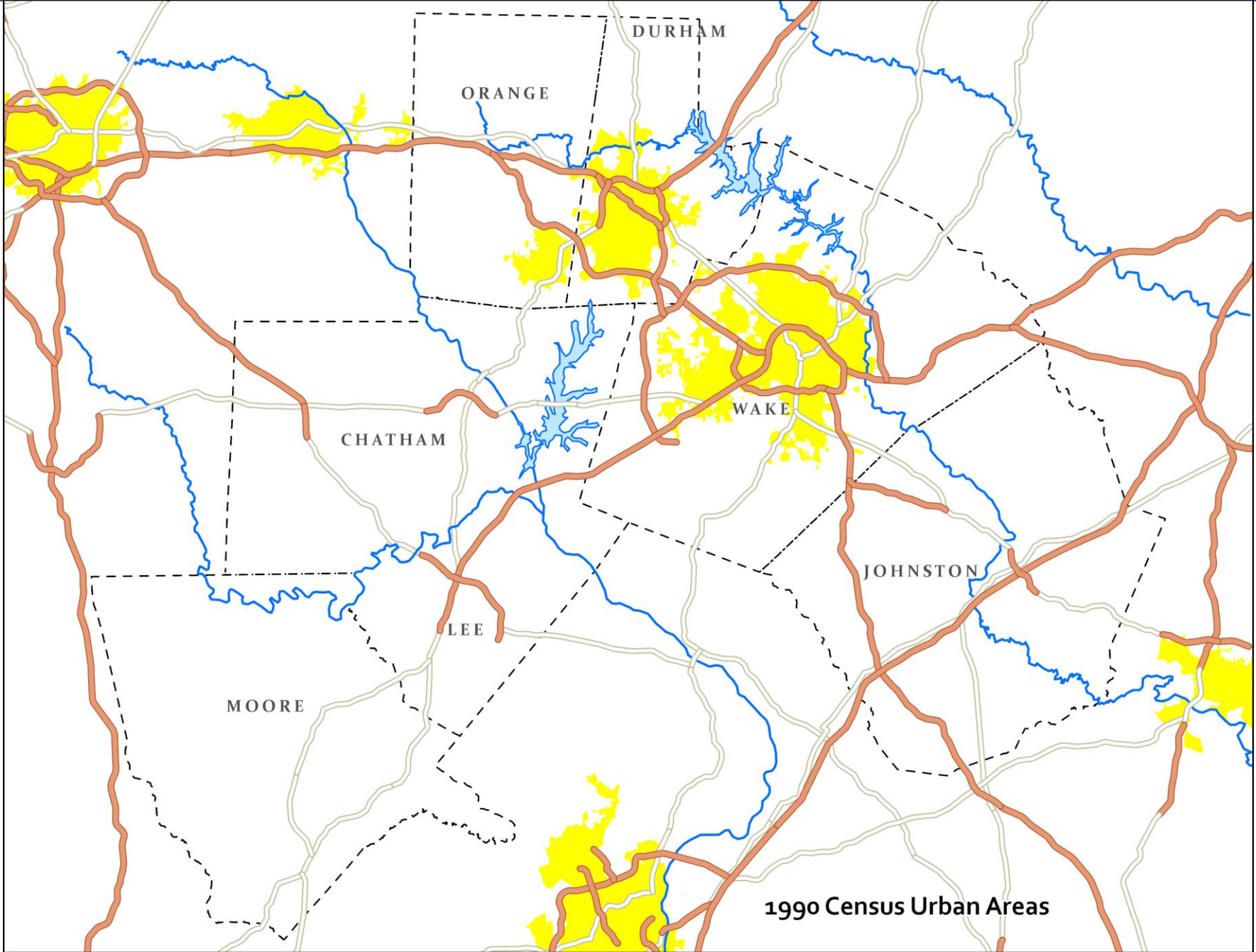
\* Most recent available OSBM projections for counties (city projections not available)



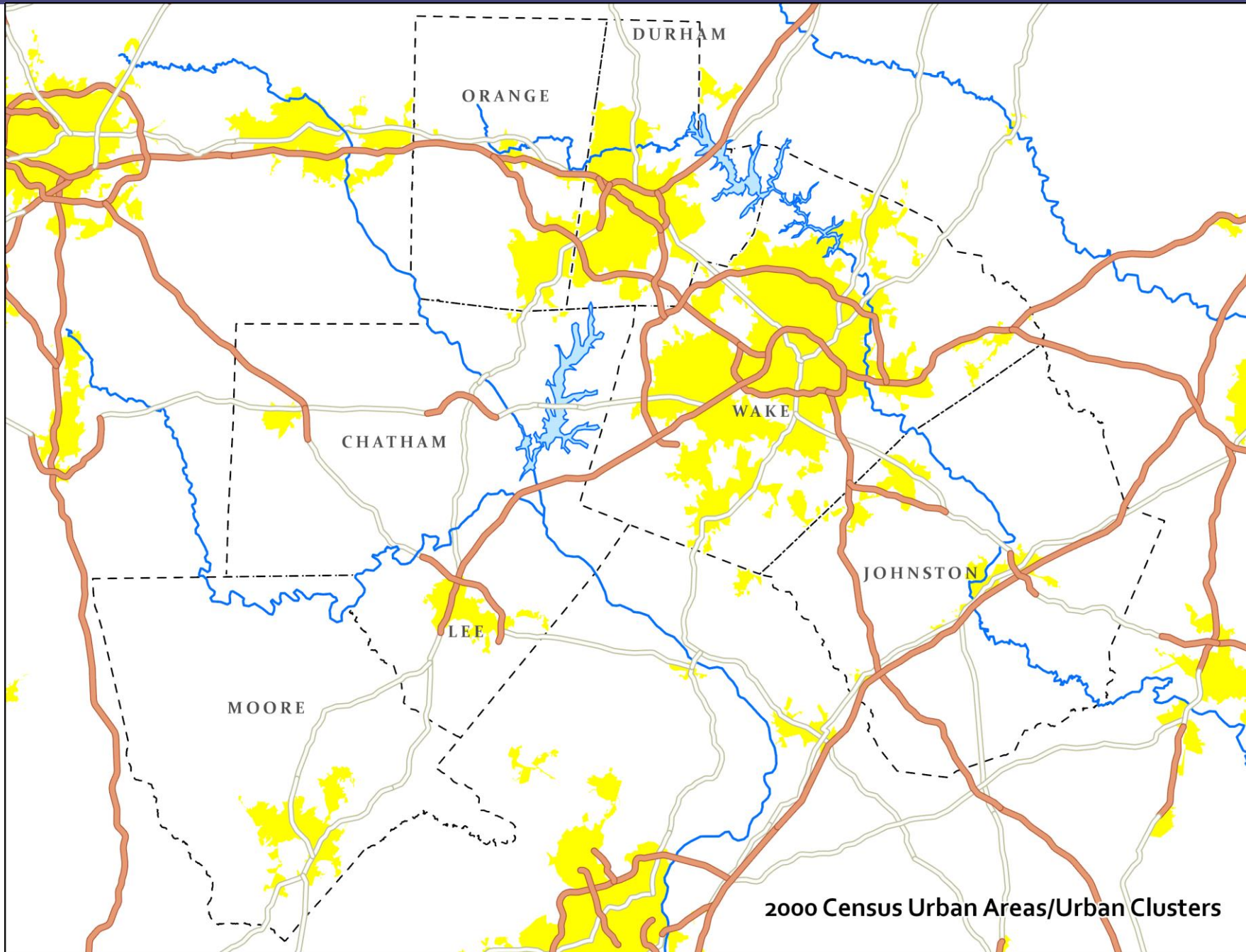
## Census-defined Urbanized Area Population – 1950 to 2020

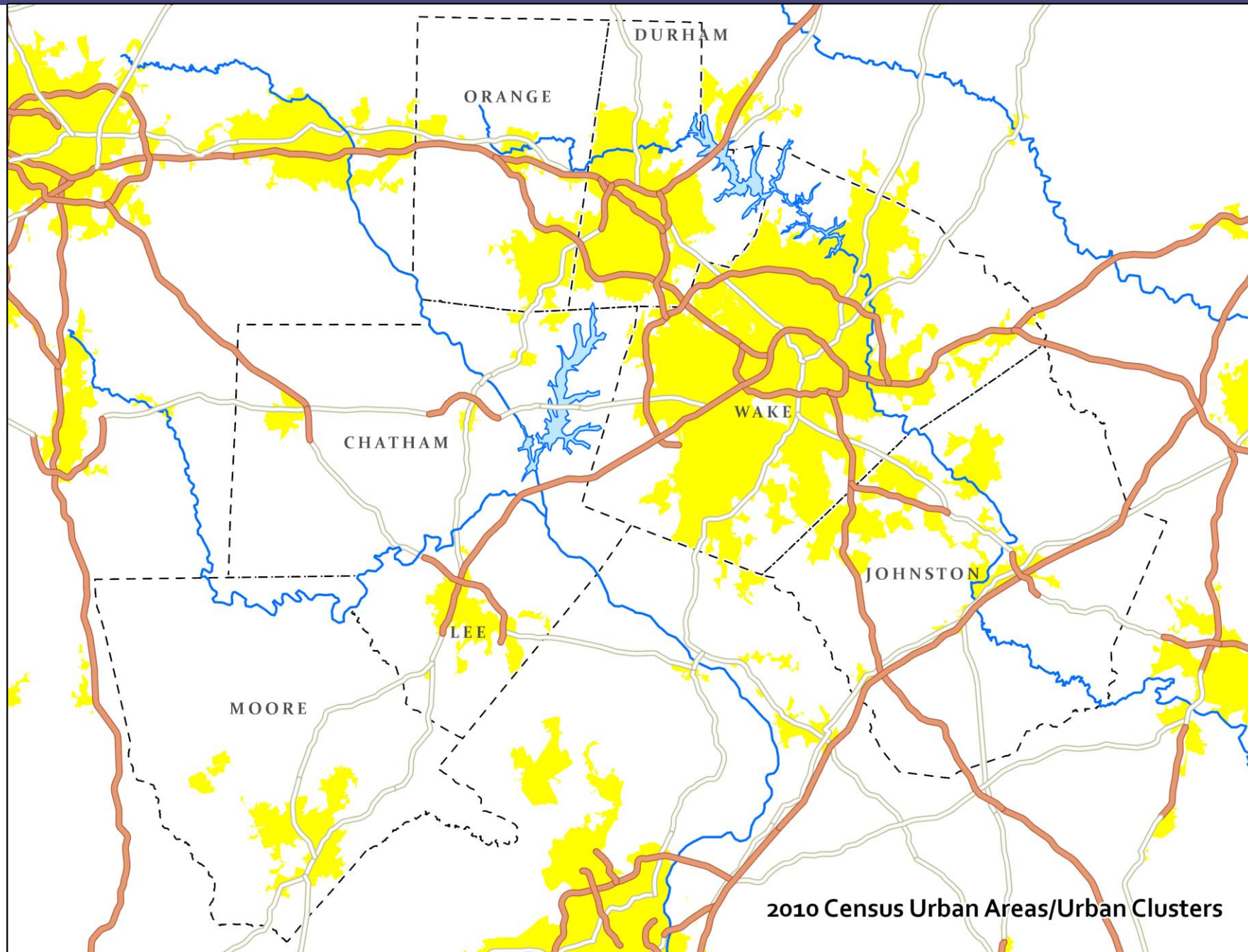


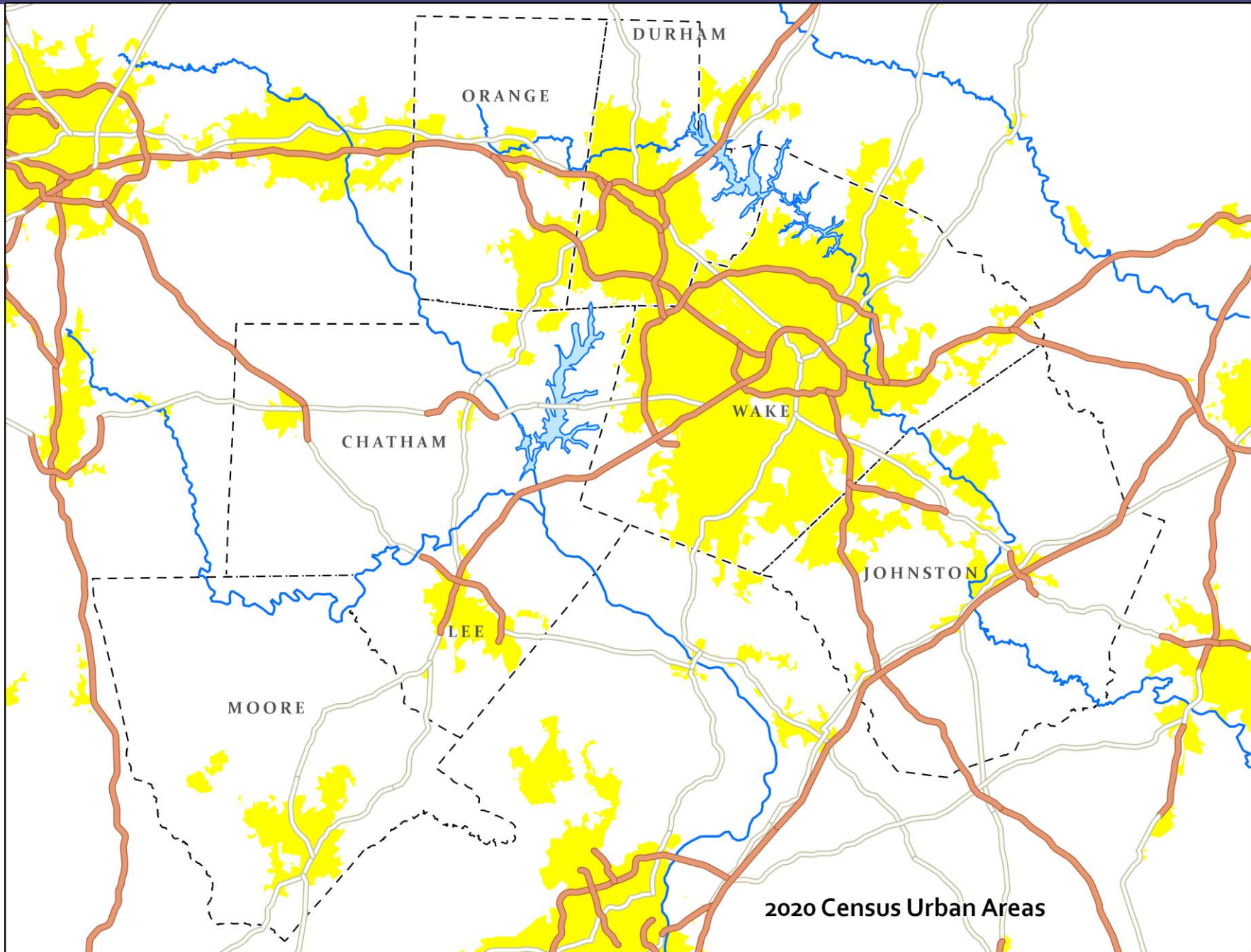


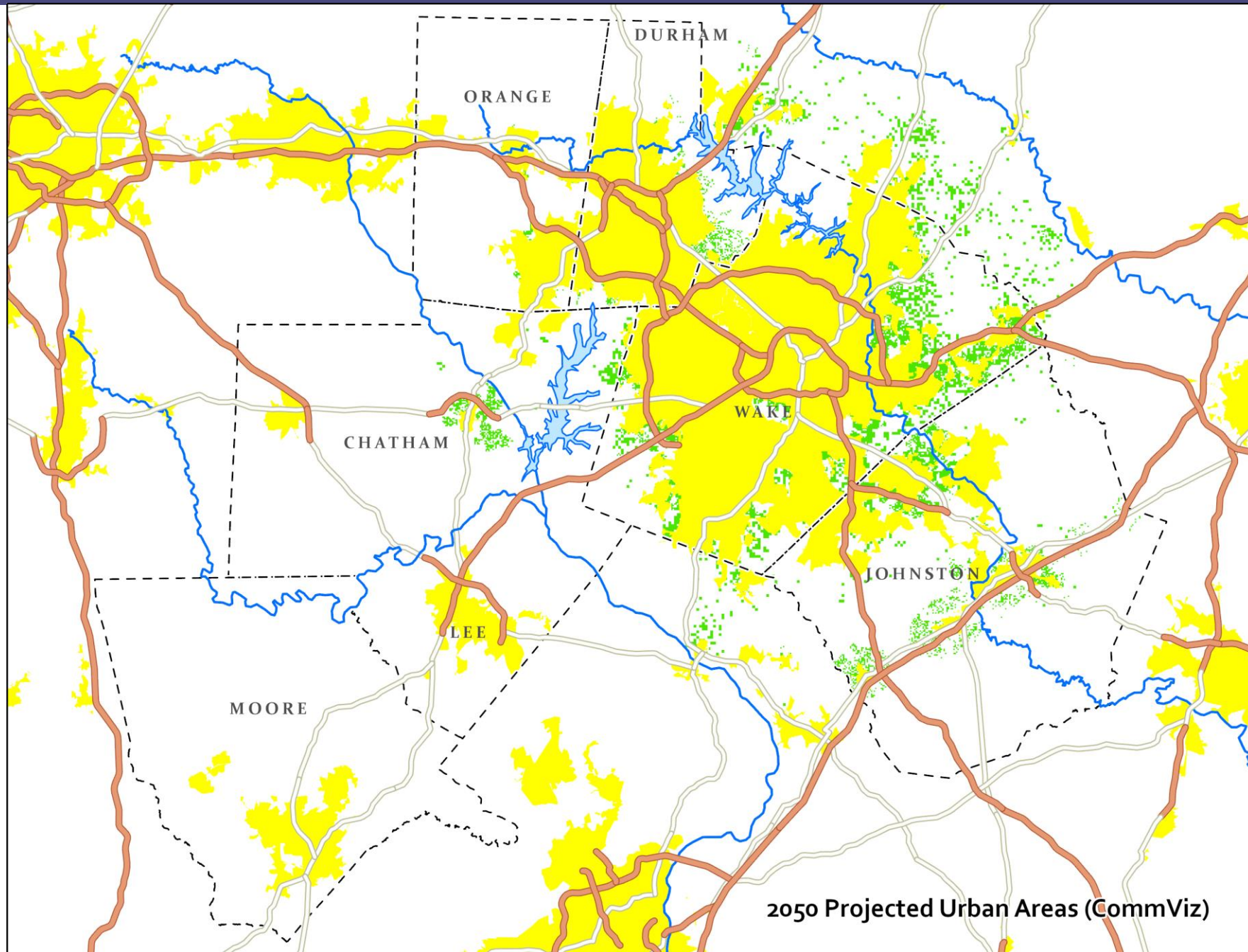


1990 Census Urban Areas





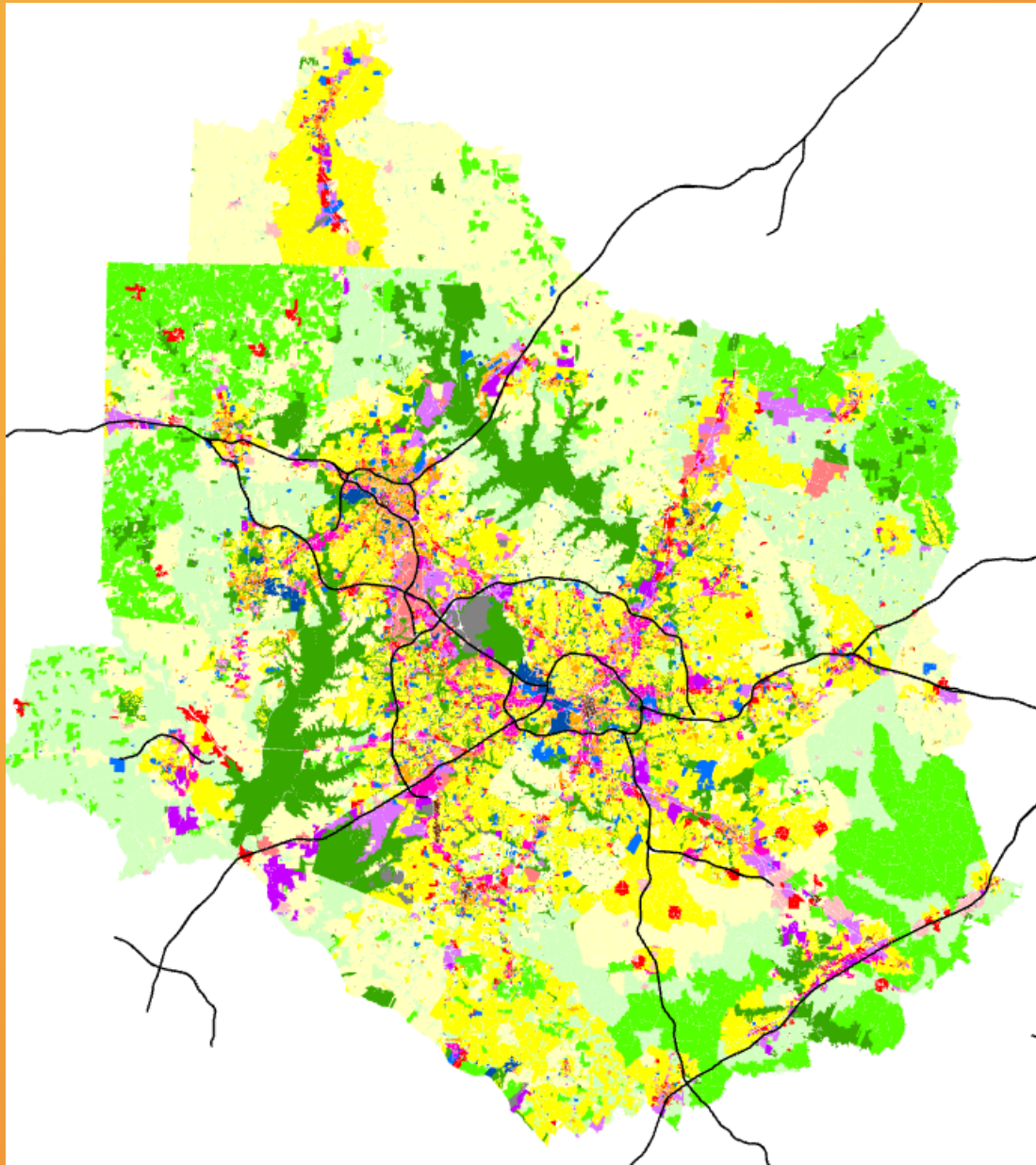




2050 Projected Urban Areas (CommViz)

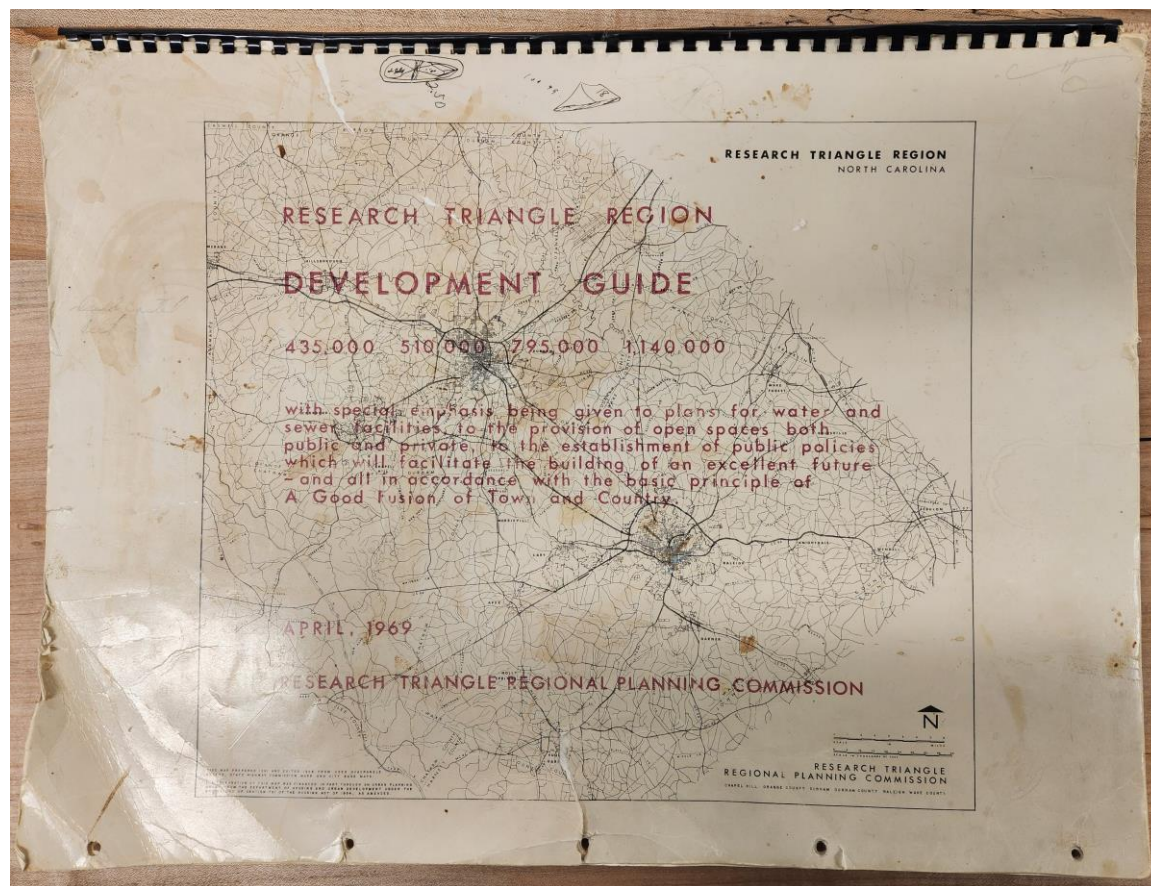


# Planning in the Central Pines Region





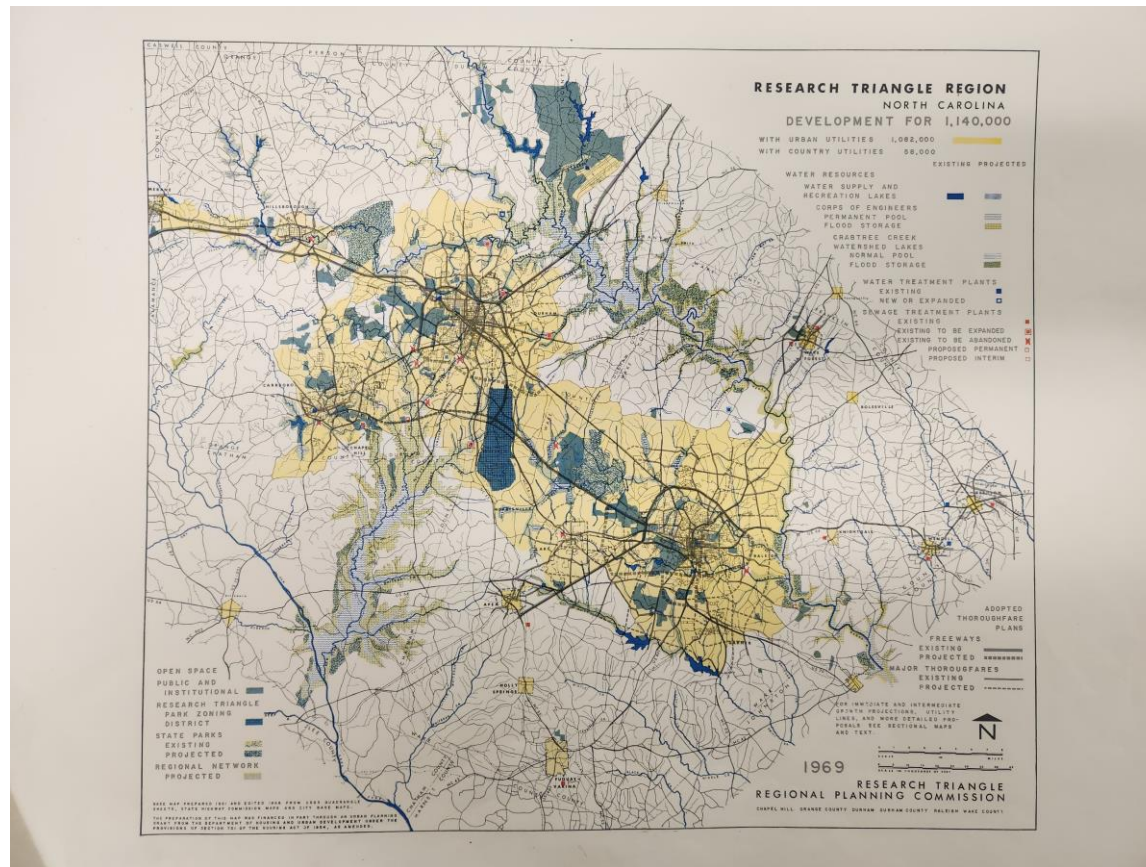
## Our Region's First Big Plan - 1969



- Developed by the Research Triangle Regional Planning Commission
- Envisioned 30 years worth of growth (from a region of 435,000 residents in 1969 to a region of 1,140,000 residents in 1999)
- Identified likely growth areas and infrastructure needs
- Pretty close to the mark with its growth forecast (actual 2000 census population of the three core counties covered by this plan was 969,000; or 1,265,000 for the seven county region)



# Our Region's First Big Plan - 1969



- Developed by the Research Triangle Regional Planning Commission
- Envisioned 30 years worth of growth (from a region of 435,000 residents to a region of 1,140,000 residents)
- Identified likely growth areas and infrastructure needs
- Pretty close to the mark with its growth forecast (actual 2000 census population of the three core counties covered by this plan was 969,000; or 1,265,000 for the seven county region)





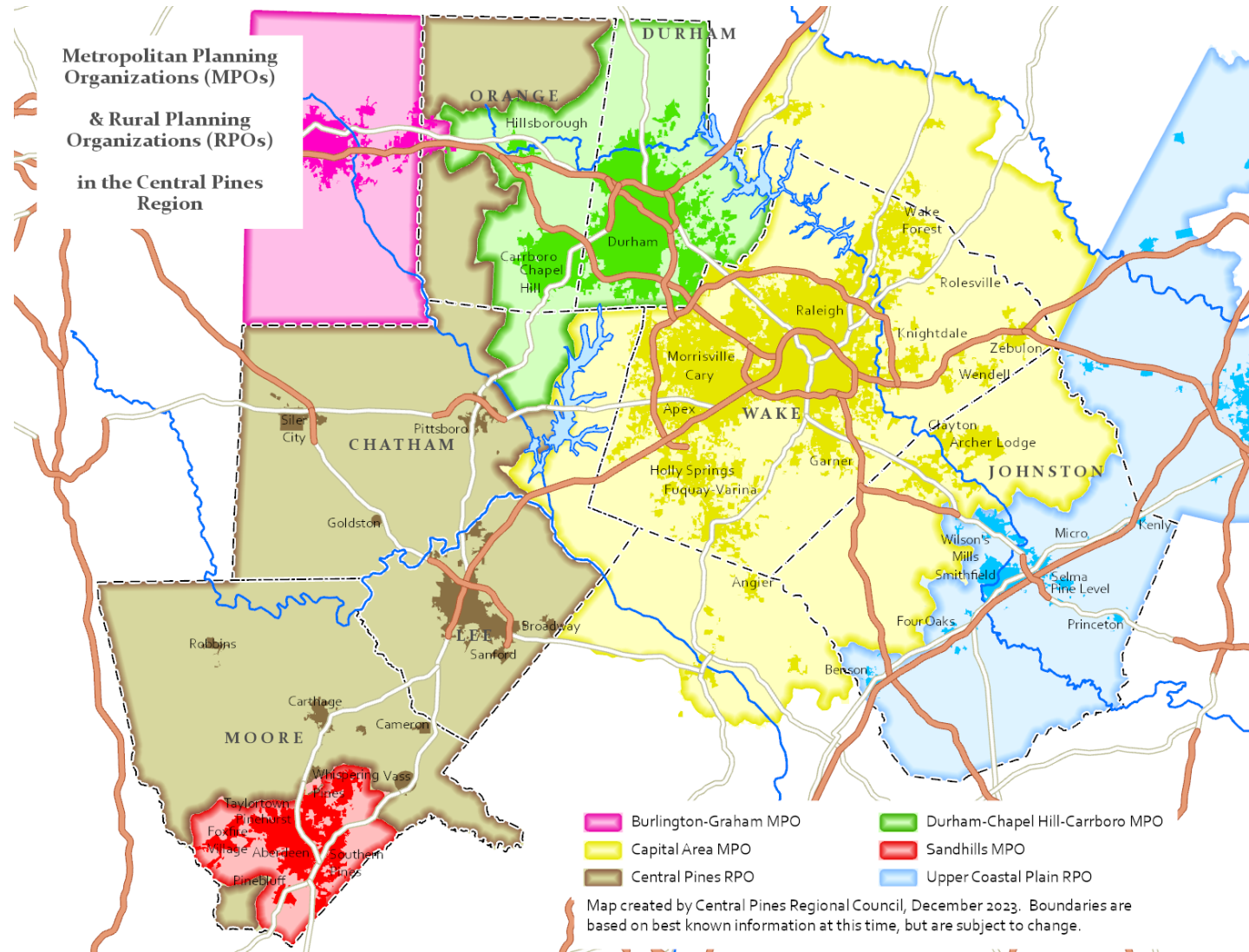


## Transportation Planning History in the Region

- The Highway Act of 1962 required a continuing, cooperative, and comprehensive regional process for transportation decision-making in urban areas. MPOs were born out of this requirement as a mechanism for conducting the “3C” process on a regional scale.
- The **Capital Area MPO** (CAMPO) was formed in 1964 as the result of a joint transportation plan that was developed by Raleigh, Cary, Garner and Wake County.
- The **Durham-Chapel Hill-Carrboro MPO** (DCHC MPO) was formed in 1980 when the census bureau expanded the Durham urban area beyond the City of Durham to also include Chapel Hill and Carrboro.
- The **Burlington-Graham MPO** (originally called the Alamance County MPO) was formed in 1974, and expanded into parts of Orange County as a result of the 2000 census.
- In 2000, the NC General Assembly passed legislation to enable the creation of RPOs to serve a similar function to MPOs, but within the rural portions of the state. Both the **Central Pines RPO** (originally called the Triangle Area RPO) and the **Upper Coastal Plain RPO** were established shortly thereafter.
- The **Sandhills MPO** was formed in 2023 as a result of a new designation of a section of Moore County as an eligible urban area following the 2020 census.

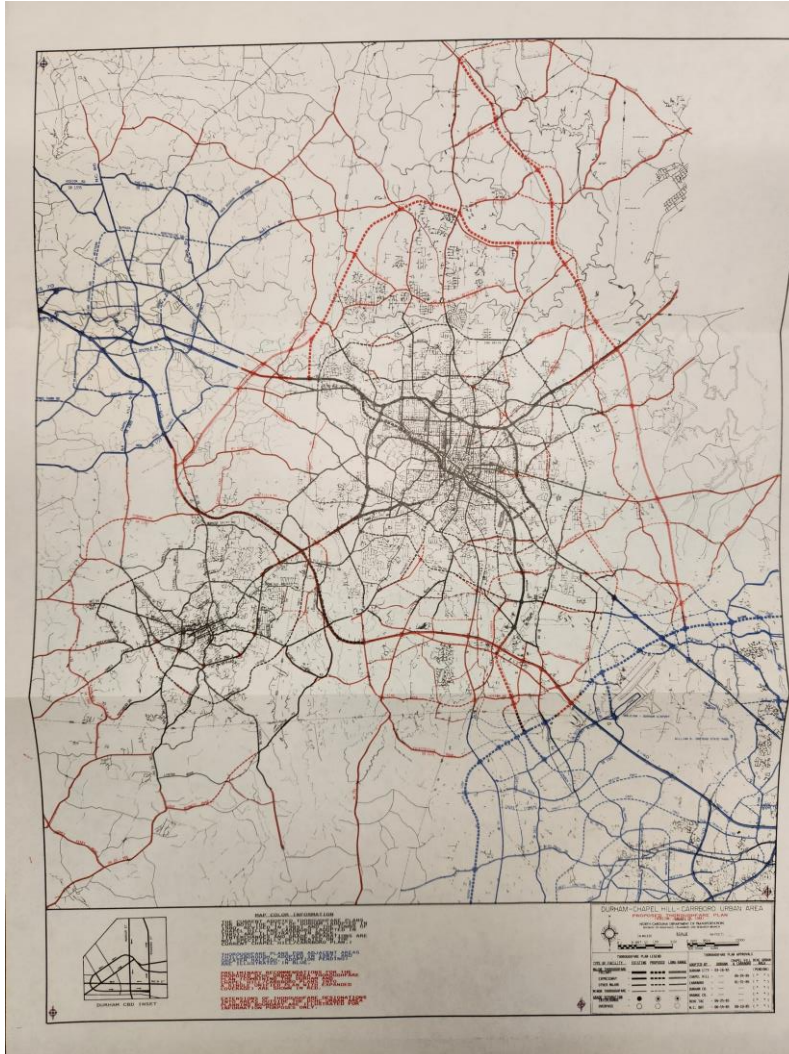


# Transportation Planning Agencies in our Region Today





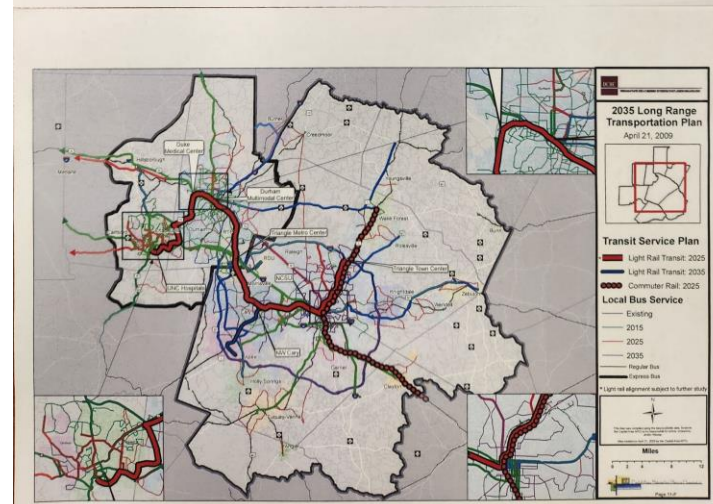
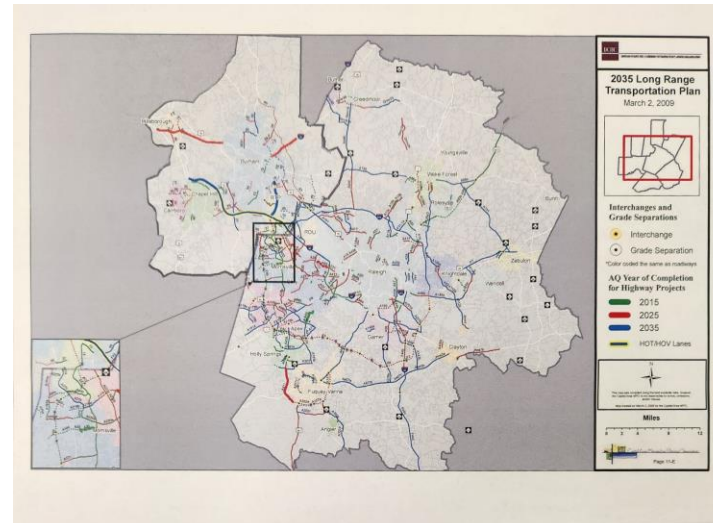
# Transportation Plans



- Many different plans were created over the years by the various MPOs and RPOs.
- This example is from the DCHC MPO 1985-2010 Long Range Transportation Plan, and shows:
  - Coordination with plans for neighboring areas (such as CAMPO, shown in blue)
  - Planned projects at the time, some of which came to fruition and some of which did not – fluid nature of plans to change over time



# Transportation Plans



- Since 2009 – when the *2035 Long Range Transportation Plan* was developed - CAMPO and DCHC MPO have worked collaboratively (along with Central Pines) to develop these long-range plans jointly.



# Other Examples of Past Regional Planning Exercises

**Triangle Greenprint, 2005**  
 Conducted by TJCOG, NCDENR & TLC

**Table 1: This table calculates the rate at which land is currently being protected in the Triangle.**

Total Acres in Six-County Study Area	2,125,500
Estimated Protected Green Space on June 30, 2002	163,600
Estimated Protected Green Space on Dec. 31, 2004	170,600
Change in Protected Acres over 2.5-Year Period	7,000
Est. Avg. Annual Protection Rate During that Period	2,800
Current Protected Land as % of Total Acreage in Triangle	8%

**Map 1**  
 Existing Protected Green Space

**Table 2: This table calculates the amount of land that would need to be protected in order to implement the full Triangle GreenPrint vision for a linked regional network of green space.**

Land in GreenPrint Area	771,400
Minus Existing Protected Green Space in this Area	131,300
Minus Groundwater Recharge Areas	84,500
Minus 90% of Regional Connector Search Areas	67,100
Minus 90% of Special Landscapes	57,600
Minus 80% of Park Connectors	20,200
Plus Additional Unprotected Natural Heritage Areas	18,900
Plus 5% of Current Use Value Farm and Forest Land	37,000
Total Target Land Protection Acreage	486,600
Protected Land as % of Total Acreage in Triangle	31%

**Map 2**  
 Full Triangle GreenPrint Vision

**Table 3: This table calculates the amount of land that would need to be preserved in order to protect the backbone of a linked regional network of green space over the next generation (25 years).**

Land in GreenPrint Parks, Greenways, Historic Areas	365,100
Plus Wake Neuse Corridor	3,000
Minus Existing Protected Green Space in this Area	108,200
Minus Portion Just Outside Region	16,100
Minus 80% of Primary Park Connectors	32,400
Minus 80% of Secondary Park Connectors	28,300
Minus 87% of Lot Lines	28,200
Total Target Land Protection Acreage Over 25 Years	157,900
Protected Land as % of Total Acreage in Triangle	18%
Avg. Annual Regional Land Protection Target	6,300
Target Protection Rate Divided by Current Rate	2.2

**Map 3**  
 Backbone of GreenPrint Vision  
 (Maps by September Barnes, TJCOG)  
 (Data Analysis by Triangle J Council of Governments)

*Triangle GreenPrint Progress Report* | September 2005 | 3

Triangle Greenprint, 2005  
 Conducted by TJCOG, NCDENR & TLC

**Checking Up on Reality Check**  
 Land-Use Planning Workshop

University of North Carolina at Chapel Hill  
 Department of City and Regional Planning  
 May 2010

Reality Check, 2008  
 Conducted by Triangle Tomorrow & ULI  
 Follow up by UNC DCRP

The Special Transit Advisory Commission ▶ **STAC**  
 DRAFT FINAL REPORT

**Regional Transit Vision Plan:**  
 Recommendations for North Carolina's Triangle Region

APRIL 2008

A Report from the Special Transit Advisory Commission to the Capital Area Metropolitan Planning Organization and the Durham-Chapel Hill-Carroll County Metropolitan Planning Organization.

Special Transit Advisory Commission  
 Regional Transit Vision Plan, 2008  
 Conducted by CAMPO, DCHC MPO,  
 TJCOG, Triangle Transit, NCDOT,  
 RTA and ITRE

**QUESTIONS?**

**CONTACT:**

**Matt Day, AICP CTP  
Transportation Director  
Central Pines Regional Council  
[mday@centralpinesnc.gov](mailto:mday@centralpinesnc.gov)  
(919) 558-9397**

